

[Subscribe](#)[Share ▼](#)[Past Issues](#)[Translate](#)

JMGA WA Newsletter March 2016

[View this email in your browser](#)

Dear Member,

Thank you to those that sent in feedback regarding the new look newsletter- it's always nice to hear what the readers think. This year is already zooming on by and here we are at our General Biennial Meeting.

Do you have something to share in the next newsletter?

Please email [newsletter@jmgawa.com.au](mailto:newsletter@jmgawa.com.au) and remember if sending photos, please use .jpg format. Unfortunately our newsletter system doesn't accept .PDF files.

The next newsletter deadline is the **11th April**.

Kind regards,

Hannah Jago

Newsletter Co-ordinator

---

JMGA WA Biennial General Meeting and General Meeting

**Monday 21 March 2016 - 7.30pm**

Doubleview Bowling Club, 17 Shearn Crescent Doubleview.

[Subscribe](#)[Share ▼](#)[Past Issues](#)[Translate](#)

### Order of Business

March General Meeting

Brief refreshment break

Biennial General Meeting and Election of Office-Bearers for 2016-18

Guest Speaker Presentation

Supper

Guest speaker on the night will be Jacquie Sprogoe, who will bring and show her collection of brooches.

---

## Opportunities

### ***WA VISUAL ARTISTS INTERESTED IN PARTICIPATING IN A PUBLICATION***

Researcher and writer Eileen Whitehead is conducting research for a book which will basically be a collection of biographies and images from visual artists practising in WA, who have either migrated here, or been born to migrant families living in WA. Eileen's recent PhD research investigated the significance to Australia of the visual art produced by displaced persons after World War II until present day, this led her to believe WA migrant artists need specific recognition. If you are interested in participating, please contact, Eileen Whitehead, [onewhitehe@our.ecu.edu.au](mailto:onewhitehe@our.ecu.edu.au) or phone (08) 9451 5310.

Contemporary Jewellery Exchange call for entries has gone out on facebook, and also on the new exchange website [www.preeapproved.com](http://www.preeapproved.com)

Mari Funaki Award for contemporary jewellery - for details visit <http://www.marifunakiaward.com/>

The 2016 Lewton-Brain Foldform Competition is open for entry - view details here <http://www.foldforming.org/>

---

[Subscribe](#)[Share ▼](#)[Past Issues](#)[Translate](#)

## JMGAWA Workshops

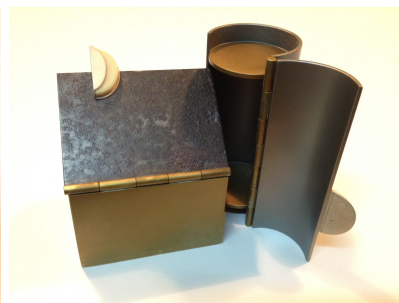
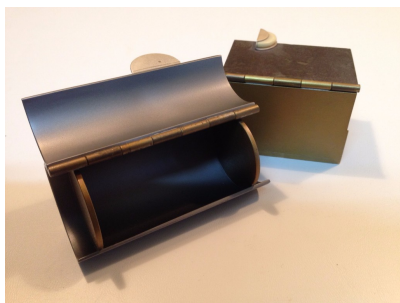


Image: Julie Blyfield

### Paper Scissor Metal with Julie Blyfield

Immerse yourself in this 3 day Design & Creative workshop with Julie Blyfield 7<sup>th</sup> 8<sup>th</sup> 9<sup>th</sup> July 2016.

Details for this JMGAWA workshop will be emailed soon. For more information please contact [sultana.shamshi@gmail.com](mailto:sultana.shamshi@gmail.com)



Images: Max Butcher

### Hinges and Catches with Max Butcher

A two day workshop journey exploring various hinges, catches and pins Saturday 30<sup>th</sup> April and Sunday 1<sup>st</sup> May 2016 9.30am – 4.30pm

Fremantle Arts Centre

Cost: \$150

**HURRY! Only 1 place left.**

## 2016 Members Exhibition - Expressions of Interest

Planning is currently underway for the JMGAWA Biennial Award Exhibition to be held in **Nov/Dec** of this year. The **theme is 'What Goes Around'**.

[Subscribe](#)[Share ▼](#)[Past Issues](#)[Translate](#)

Approval from Turner Galleries in Northridge, to hire one of their exhibition rooms for the JMGAWA exhibition, was recently received however exact dates are not yet confirmed. Please note: the proposed dates do overlap with the Fremantle Christmas Bazaar.

If you are interested in exhibiting, please send an **email to Di Dunstall** [justdi@iinet.net.au](mailto:justdi@iinet.net.au) by **Sunday 3<sup>rd</sup> April**. This is a non-binding Expression of Interest to help the sub-committee with decision making regarding display, maximum number of pieces etc. More information, including a registration form will follow at a later date.

## Exhibitions

### A Year in the Making

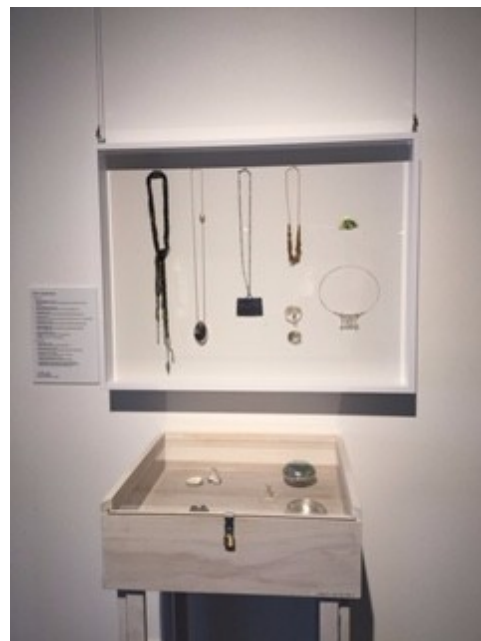
Open from 15<sup>th</sup> March to 16<sup>th</sup> April, 2016.

at WANNEROO LIBRARY AND CULTURAL CENTRE,

3 Rocca Way, Wanneroo.

Monday to Saturday, 10am - 4pm.

Just off Wanneroo Road, and easy to find. The exhibition is upstairs (with some of the artists showing items for sale as well, in showcases on the ground floor.)



Images of work by Claire Townsend from her "choose your own adventure" theme piece. Title is "a false story on the hand again, because witches always have black cats..."

[Subscribe](#)[Share ▼](#)[Past Issues](#)[Translate](#)

Images of work by Christel van der Laan. Left: Brooch, *Self-Reflection*, Oxidised silver, mirrors, 18ct gold.  
Right: Brooch, *Oversight*, Oxidised silver, litter, stones, all collected on the beach in Port Hedland.

The 3rd year of the **Margaret River & Regions Open Studios** is happening over the period:

9 - 24 April 2016

[www.mrros.com.au](http://www.mrros.com.au)

Approximately 120 artists at 80 studios in the south west will have their studios open, so if you are in the area between Busselton and Augusta over the school holidays do drop into see some of the amazing artwork produced in the area.

[Subscribe](#)[Share ▼](#)[Past Issues](#)[Translate](#)

# LINNEYS



## MADONNA'S

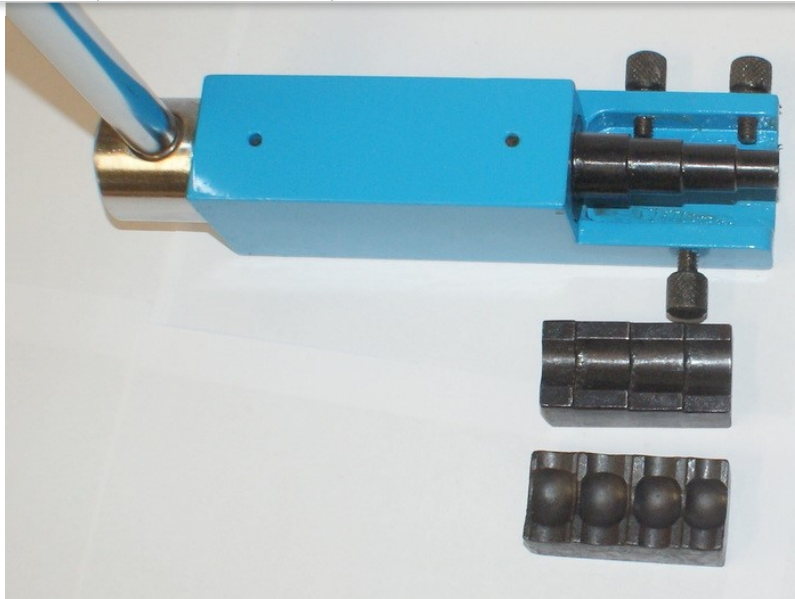
### \$5M DIAMOND WEDDING TIARA IN AUSTRALIA

To coincide with Madonna's first tour of Australia in 23 years, Linneys has sourced the diamond tiara Madonna wore on her wedding day to Guy Ritchie. This will be the first appearance of the tiara in Australia.

The Edwardian tiara handmade in London was created in the early 1900s and contains 765 diamonds equalling 78 carats in total. It is currently valued at more than \$5 million.

The tiara will be on display at the Linneys Subiaco showroom from Saturday 12 March - Tuesday 15 March, and the Linneys Sydney Showroom from Friday 18 March - Monday 28 March.

## For Sale at Western Frontier Traders

[Subscribe](#)[Share ▼](#)[Past Issues](#)[Translate](#)

Ring Bending Machine Code W000662 \$310+gst

Ring Bending Machine European style includes 2 sets of ring bending dies and a attached stepped mandrel

Made from heavy duty cast iron construction, bends flat, oval and half round material up to 4mm thick.



**Tuesday 26 April 2016**

Crystal Universe & Meal out  
Details & time – Sultana Shamshi

**May 2016**

Visit to AJS & Meal out  
Details TBC - New President

**New classes and visiting artists at Contemporary Metal**

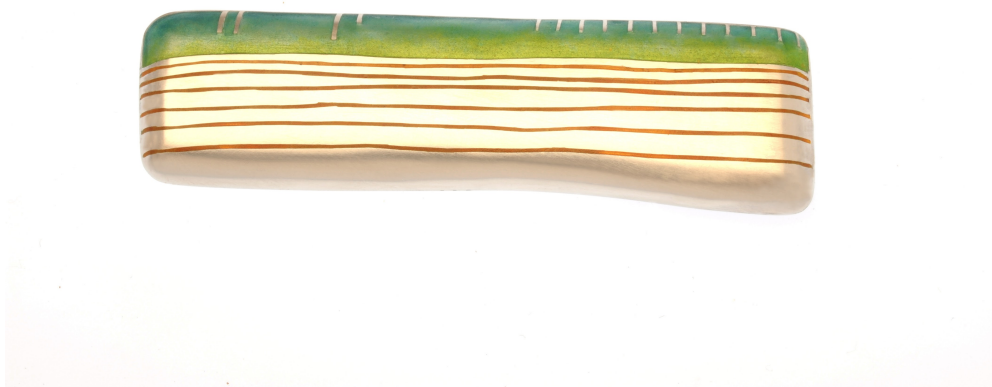
[Subscribe](#)[Share ▼](#)[Past Issues](#)[Translate](#)

Image: Helen Aitken-Kuhnen

Helen Aitken-Kuhnen is coming to Contemporary Metal!

Come and do a three day workshop with this highly acclaimed enameler and jeweller. Helen has years of experience and her work is inspirational, highly technical and beautiful. Please check out the website to register your interest in this awesome opportunity. Both beginners and advanced classes in September.



[Subscribe](#)[Share ▼](#)[Past Issues](#)[Translate](#)

Image: Christel van der Laan

Christel van der Laan is conducting a design workshop on April 1st, come and learn design tips from the internationally acclaimed artist.

We have Helen Aitken -Kuhnen doing enamelling workshops in September, Regine Schwarzer doing stone setting and cutting in July, Lots of new short classes; earring, hammered bangle, stack rings in a day and many more. Please check out the website for all the details and email as places are limited. [www.contemporarymetal.com.au](http://www.contemporarymetal.com.au)

Find us on Facebook and the Web!



Facebook



Website

Copyright © 2016 Jewellers and Metalsmiths Group of Australia, W.A, All rights reserved.

[unsubscribe from this list](#) [update subscription preferences](#)

MailChimp.